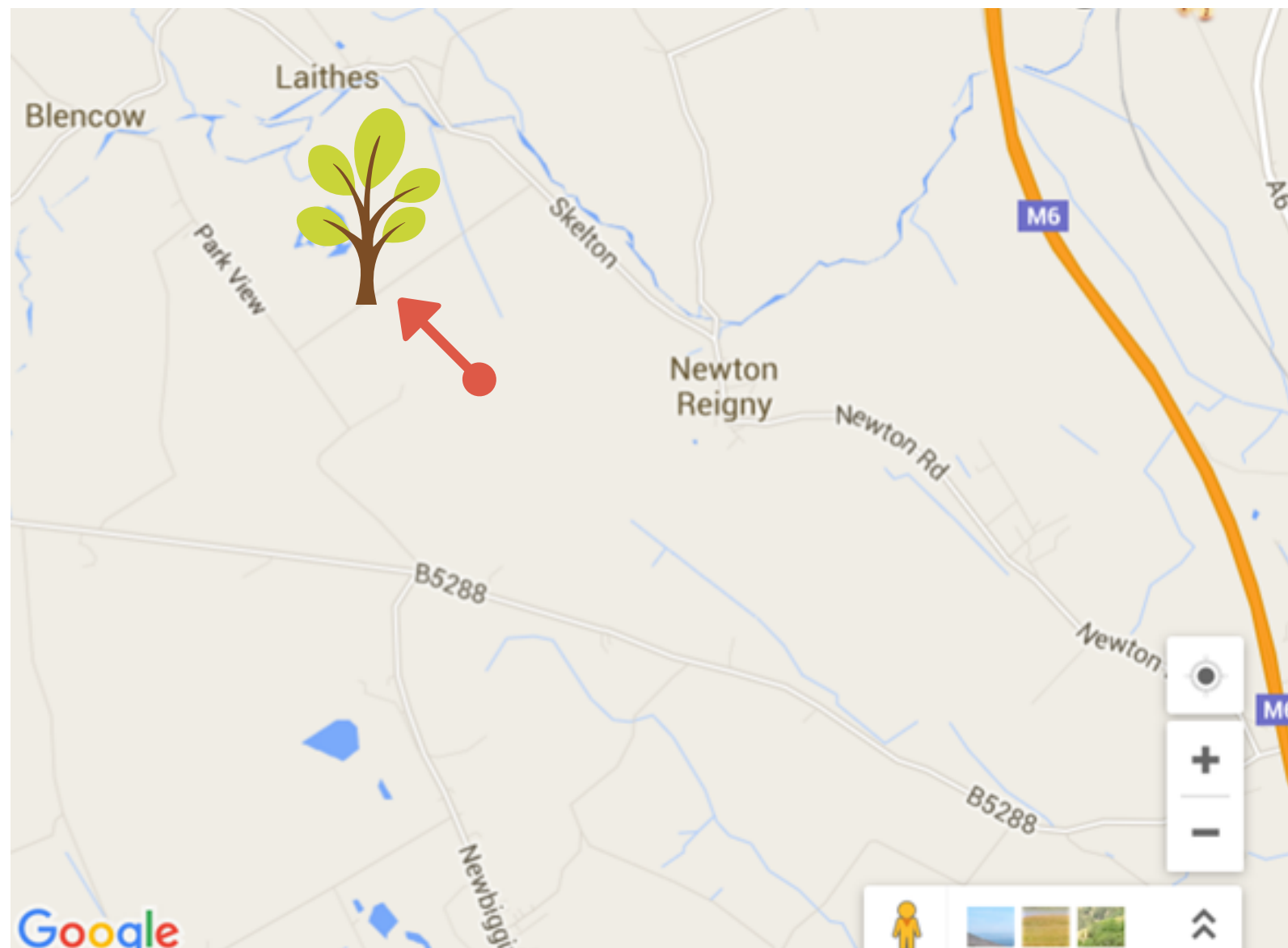
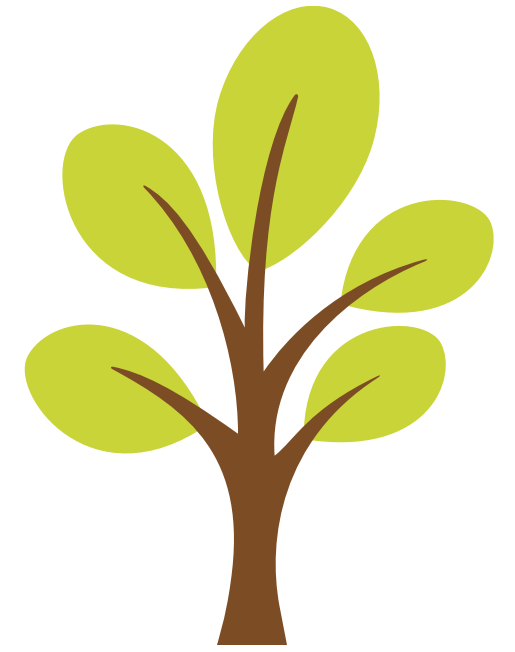


# BRANCH OUT EDUCATION DIRECTIONS

## Directions to Birkmere

Birkmere Woodlands  
Potters Lane  
Blencow  
Penrith  
CA11 0DA



From Penrith:

Take the B5288 road out of Penrith towards Greystoke. At Clickham Inn turn right towards Blencow. Take the next right turn towards Laithes/ Newton Reigny. You will see the woods on your left.

From Carlisle:

1. Take the road out of Carlisle via Durdar. Drive all the way to Hutton in the Forest. At T-junction onto the B5306 turn right. At the big bend turn left towards Blencow. Turn left at the crossroads towards Penrith. Drive through Laithes and take next right. The woods are on your right.

2. Take M6 South to Penrith (Junction 40). At the roundabout take first left towards Penrith. Turn left at the roundabout past Go Outdoors. At David Hayton garage turn left. Follow this road to Clickham Inn. Turn right here and take the next right hand turn. You will see the woods on your left.

There are two entrances on Potter's lane- look for the metal gate with car parking inside (not the entrance with stone wall and Birkmere sign)

We will meet you there and walk into the site together.

